



**NEW SOUTH WALES  
RECORD OF SCHOOL ACHIEVEMENT (RoSA)  
ASSESSMENT POLICY  
2018**

*Year 10 Adviser: Mr N Williams*

*Principal: Mr M Hensley*

*Deputy Principal Year 10: Mr B Cowell*

## School Philosophy

Kingscliff High School has established a reputation for outstanding achievement in all areas of school life. The school enjoys an enviable reputation in the local and wider community. The school's motto, "**Achievement through Endeavour**" provides the philosophy upon which all areas of our school life are based.

The School endeavours to set the highest standards for our students in all areas. This is reflected in the policies under which we operate.

- Academic quality and achievement are corner-stones of the School's philosophy, along with strong programs in sport, the creative and performing arts and community service.
- All students are assisted and encouraged to acquire skills, knowledge and positive attitudes, enabling each individual to achieve to his/her own highest potential.
- Kingscliff High School is a "uniform" school with a strong commitment to dress code.
- The School is proud of our extensive program of student care and welfare. This centres on things such as our Head Teacher Welfare, an active Welfare Team, Year Advisers, School Counsellor and a range of programs for students with specific needs.
- We have a commitment to physical fitness. Sport is compulsory in Year 10 and students are expected to participate fully in school sporting carnivals.
- The school's extra curricular activities are seen as a valuable and rewarding part of the curriculum.
- The School provides excellent facilities and opportunities for all practical subjects along with innovative programs in Science, Technology, Engineering and Maths (STEM) and information technology and communication.
- The school offers many co-curricular activities and programs aimed at developing high levels of maturity and leadership amongst all students.

**"Achievement through Endeavour"**

## General Information for Year 10

1. Merely attending will not gain you a NSW Record of School Achievement (RoSA).
2. A NSW Record Of School Achievement can only be earned through “sustained diligence and effort” from the student. You are expected to attend classes and work to the best of your ability.
3. You must satisfactorily complete all mandatory courses to gain a RoSA. The mandatory courses are:
  - English
  - Mathematics
  - Science
  - Australian History
  - Australian Geography
  - Personal Development, Health and Physical Education (PDHPE)
4. One assessment task may be used to measure a variety of outcomes.
5. Satisfactory completion will be determined by looking at your effort and results in class work, assignments and examinations.
6. If you miss lessons **it is your responsibility** to find out if any information about assessment tasks was given out during the period of absence in addition to catching up any missed work. In cases of prolonged absence you should request that school work be sent home for you to complete.
7. If you don't understand what is required of you in any assessment task or tasks **it is your responsibility** to seek help from your class teacher, the Head Teacher, your Student Adviser or the Deputy Principal for Year 10.
8. You will need to attend each lesson and complete all class work. The school may refuse to grant a RoSA to a student whose attendance or application at school has been unsatisfactory.

*It is your responsibility to carefully read and understand this information.*

### **IMPORTANT message to Parents and Students**

***FAMILY HOLIDAYS and Other non-school approved business are not valid reasons to miss or not undertake assessment tasks at the correct time.***

***This applies to the Year 10 RoSA, Year 11 RoSA and HSC courses.***

***Assessment tasks can be scheduled at various times throughout the school terms so it is strongly advised to take holidays and other business that may affect your child's attendance during school vacations.***

## Literacy and numeracy tests

If you are in Year 10 this year and have told your school you want to leave, you will have the choice to sit for literacy and numeracy testing in November 2018.

- The tests will be offered online and will be taken at your school under the supervision of a teacher. The tests are a useful option if you are looking for jobs where the employer wants to see evidence of a level of literacy and numeracy.
- Each test will be of 60 minutes duration, and the two tests will be completed in one sitting.
- These will not be pass/fail tests – they will be designed to show levels of achievement that are reasonable to expect from students leaving school after the end of Year 10.
- The tests will be offered in schools during a number of 'windows' each year. You will only be able to sit for the tests once during each window but, if you later decide to stay at school longer, you will be able to take the tests again.
- The literacy and numeracy test results will be reported separately from the RoSA credential.
- More information on the voluntary online literacy and numeracy tests will be available later in 2018.

## Change of Address or Circumstances

Please notify the School **immediately** of your new circumstances and/or address, phone number and emergency contact. The front office must be notified in writing. If you fail to do this mail goes astray, parents cannot be contacted when students become sick or have an accident and certificates such as the record of achievement may be sent to the wrong address. This is also important if you change your name or now use a different name on official documents.

## Attendance

Students must attend all programmed lessons. Rolls are marked every period.

- Students must arrive before 8.45 am for roll call and must be on time for all scheduled lessons.
- Students may not leave the school during the day unless they bring a signed request from their parent/guardian and have it endorsed by the Head Teacher Administration. This is only available for emergency or other unexpected circumstances.
- Students who truant for any period may have to make up lost time at **recess or after school detention**.
- Students may be given after school detentions to complete Assessment Tasks if the student fails to submit a task by the due date.

## Lateness

Students who arrive late for school - either in the morning or from lunch must report to the office, with a signed note of explanation. The school will contact parents in the case of repeated and unexplained lateness. Students without a late note will not be admitted to class.

## Out of Class

Students must be in possession of an official note to be out of class. These notes can only be issued by the front office or the class teacher.

## Out of School

Notes from parents for passes out of the school, for Doctor or other essential needs, are taken to one of the Head Teachers Administration at the beginning of the day for signing. They are then taken to the front office to obtain a pass. Students must sign out and back in if they return at the front office. Every effort should be made to make appointments out of school hours.

**Sport is a mandatory requirement from all students and failure to participate to a satisfactory standard will mean the student does not receive a RoSA. Please refrain from making appointments in Sport time for this reason.**

## Use of Technology

When a student wishes to hand in work done on non-school computers it is the student's responsibility to ensure it is compatible with the equipment currently available within the school. Students should also supply the teacher with a printed copy of the task (unless other provisions have been made by the teacher). Equipment failure, hardware or software incompatibility or failure of school equipment to read a disc is the student's responsibility and the student will be deemed not to have handed in the task on time if this occurs.

## Diary

At the commencement of each term a diary of all anticipated events is compiled and is available for 50 cents from the front office. Dates of examinations and assessments, P&C meetings, sporting fixtures and others are included in the school diary. Parents and students can anticipate and prepare for the coming events by consulting this calendar. All students should purchase a school diary so they can access important dates and document tasks and commitments due.

## Study timetable

It is also recommended that all Year 10 students use a study/revision/homework/assessment task timetable and use it to organise their time efficiently.

## Parent-Teacher Functions

Structured interviews follow the issue of Half Yearly Reports. Meeting times are scheduled with teachers for each of the courses taken by the student.

These meetings are arranged to enable parents to meet teachers, to discuss student progress and attitude, give information and to indicate problems that the students may have.

## Newsletter

A school newsletter is produced every second week and placed on the school's website:

<http://www.kingscliff-h.schools.nsw.edu.au/newsletters> or google Kingscliff High School. The newsletter is also emailed to parents, if you are not receiving the newsletter by email, please update your email address with the Front Office staff. The newsletter is an important avenue for communicating a wide range of education, cultural, sporting and social activities. It often contains details/dates of important, coming events, scholarships and traineeship opportunities.

## YEAR 10 EXAMINATION RULES

<b>ENTRY INTO EXAM VENUE</b>	<ul style="list-style-type: none"> <li>Should be in class groups as instructed by teachers</li> </ul>
<b>LATE ARRIVAL</b>	<ul style="list-style-type: none"> <li>Students should be on time for all exams</li> <li>No entry to the exam will be allowed 30 minutes or more after exam start time</li> <li>No extra time will be granted for students who arrive late</li> </ul>
<b>NO TALKING AND NOISE</b>	<ul style="list-style-type: none"> <li>No talking upon entering the exam venue</li> <li>No talking during the exam</li> <li>No talking at the completion of the exam</li> </ul>
<b>EQUIPMENT</b>	<ul style="list-style-type: none"> <li>It is the student's responsibility to bring all necessary equipment needed for each exam</li> <li>No borrowing is permitted in the exam venue</li> </ul>
<b>REMAIN SEATED</b>	<ul style="list-style-type: none"> <li>Students should be seated and facing the front whilst in the exam venue</li> </ul>
<b>LEAVING EARLY</b>	<ul style="list-style-type: none"> <li>Years 7 – 11 students are not permitted to leave an exam before the stated finish time</li> </ul>
<b>TOILETS</b>	<ul style="list-style-type: none"> <li>Students should visit the toilet before each exam</li> <li>Toilet breaks will not be granted during an exam unless a Doctor's Certificate has been supplied to the Deputy Principal prior to the exam</li> </ul>
<b>CHEATING</b>	<ul style="list-style-type: none"> <li>Any form of cheating or "non serious attempt" will result in a student receiving a zero mark for that exam</li> </ul>
<b>MOBILE PHONES, MP3 PLAYERS AND DATA STORAGE DEVICES</b>	<ul style="list-style-type: none"> <li>Any student who is caught in the possession of a mobile phone, MP3 or data storage device in the exam venue will receive a zero MARK for that exam</li> </ul>

### CONSEQUENCES FOR BREACHING EXAM RULES:

- General warning is the final warning
- First personal warning will result in the loss of 20% of exam marks and will be noted on the exam paper
- Second personal warning will result in receiving a "zero" for that exam and will be noted on the exam paper
- No personal warnings will be issued for cheating or mobile phones.

### ILLNESS AND MISADVENTURE:

Students unable to attend exam/s due to illness or misadventure should:

- Inform the school ASAP, preferably prior to the exam;
- Submit written reason for absence (such as a doctor's certificate, note from parent/care provider etc) to your class teacher on the first day back at school;
- Where no note is supplied or the reason for the absence is unacceptable (such as misreading the exam timetable, truancy or attending a non-school events) a zero will be awarded for the examination missed.

### Gaining a NSW Record of Achievement (RoSA)

Records of Achievement reflect your efforts. Students who do not make a satisfactory effort will not receive a good record of achievement.

Before you can be awarded a Record of Achievement you must fulfil the following requirements:-

- 1) Satisfactorily complete courses in English, Mathematics, Science and Australian History/Geography.
- 2) Satisfactorily complete a minimum of 300 hours of PD/HEALTH/PE, a minimum of 100 hours of Music, Languages and Visual Arts, and 200 hours of Design and Technology.
- 3) Each student must attend at least 85% of the available school time. If your attendance falls below 85% (approximately 15 days per semester) and as a result you cannot satisfactorily complete courses, you will become ineligible for RoSA. Frequent absenteeism affects your level of sustained, diligence and effort towards your schooling.
- 4) You must attend school up to the last day of attendance in December as determined by the Department of Education and Training.

### Satisfactory Completion of a Course

A student will be considered to have satisfactorily completed a course if, in the Principal's view, there is sufficient evidence that the student has:

- (a) **followed** the course developed or endorsed by the NSW Education Standards Authority (NESA); and
- (b) applied themselves with **diligence and sustained effort to** the set tasks and experiences provided in the course by the school (**coursework**); and
- (c) **achieved** some or all of the course outcomes.

### This means that

- (a) You must attend lessons in that course for the required number of hours,
- (b) bringing the correct equipment and books.
- (c) You must make a **genuine effort** in all class activities.
- (d) You must make a **serious attempt** at all your assessment tasks.



## School Examination Attendance

Examinations are compulsory assessment tasks. Year 10 students must seriously attempt the Half Yearly and Yearly Examinations at the times nominated in the Assessment Schedule and school Examination Timetables. Examinations for individual students or classes will not be rescheduled unless the Deputy Principal has granted special permission. This permission in nearly every case will need to be sought prior to the exam. This will be based upon documentation supplied to the Deputy Principal at least one week before the examination. If students are not feeling well they should do the examination and report the illness to the exam supervisor. They must also then report their illness to the Year 10 Deputy. A medical certificate should also be supplied as soon as possible after the exam and attached to an Illness/Misadventure form. "Soft" excuses such as misreading of the exam timetable, attending family holidays or non school events will result in ZERO being awarded for the examination missed. No rescheduling of an examination or an estimate will be given for such excuses. An estimate will only be given in cases of extreme or genuine misadventure that prevents examination attendance. Applications will be viewed on a case by case basis. Wherever possible, the student will complete the examination or similar at a later date.

## RoSA Assessment

Assessment will be a continuous process and it is important you complete tasks to the best of your ability. Student progress will be reported to parents and students at the end of each semester.

At the end of Year 10, grades will be awarded for each of your subjects which indicate your level of achievement. **The grade you will receive is determined by how well you meet the required outcomes of the course for each subject's assessment grid.** Grades in each subject will be indicated by the letters A, B, C, D or E.

## Determining RoSA Grades

As NESA stipulates that each student's grade should represent their level of achievement at the end of the course, this school will determine grades using the following guidelines:

100 Hours Course grades will be compiled from Year 10 Semester 1 marks only.

(The only exception to this is for Personal Development, Health and Physical Education (PDHPE) which will use marks from one semester of Year 9 and any marks available from the Year 10 course.)

200 Hour Course grades will be compiled from Year 10.

## Dealing with Assessment Tasks

### Notification of Assessment Tasks

Students will be given a minimum of one week's notice for an assessment task.

Use the school diary to organise your tasks and present them on time.

If a student participates in a special school event and this interferes with their:

- i) Attending an assessment activity OR
- ii) Meeting an assessment deadline OR
- iii) Adequately preparing for an assessment activity

the student may be eligible for special consideration in order to compensate for the loss of time. It is the student's responsibility to fill out the application for assessment variation form, and inform the Deputy and Head Teacher well in advance of any special events.

### **Missed Assessment Tasks**

If you are absent for an assessment task, you must see the Deputy Principal for Year 10. If the assessment task is a whole year examination your teacher will direct you to see the appropriate Head Teacher for an alternate time to complete the task.

### **Assessment Tasks Handed in Late**

Students in all instances are advised to hand work in by the due date, even if it is incomplete. If that does not happen, students need to fill out the assessment variation **form and hand it to Year 10 Deputy for approval and then to their teacher**. Late submissions will incur the following penalties:

1 day after due date = deduct 10% of marks awarded

2 days after due date= deduct 20% of marks awarded

3 days after due date= deduct 30% of marks awarded

Work not handed in after 5 days will receive zero marks, but must be still submitted.

### **Extensions of Time**

Extensions can only be granted by the Deputy Principal responsible for Year 10. An extension will only be granted when the student can prove a case of extreme difficulty in meeting an assignment deadline. Application must be made on the assessment variation form PRIOR to the due date.

### **Cheating or truanting on the day/lesson a task is to be completed**

If the Head Teacher is satisfied that you cheated in any assessment task or truanted on the day or period of the task, a zero mark will be awarded.

### **Unsatisfactory "N" Determinations**

If at any time it appears that a student is at risk of receiving an "N" determination in any course, the Principal, Deputy Principal or Teacher must warn the student as soon as possible and advise the parent or guardian in writing. This warning will be given in time for the problem to be corrected.

Students who do not show improvement will be interviewed by the Deputy Principal for Year 10.

Students who have not complied with the requirements and have **received two warning letters will be regarded as not having satisfactorily completed the course**.

**The principal will then apply the "N" determination if the student does not make the effort to improve.**

### **Consequences of "N" Determinations**

If a student is given an "N" determination in a course they will be required to attend an interview with the principal and parents to explain why they should be allowed to progress to Year 11. This will jeopardise their subject selection and position/selection in Year 11 classes.

**SUBJECT:** ENGLISH  
*Mandatory* 2018  
**HEAD TEACHER:** Ms K Rose

**INTRODUCTION:** The Stage 5 English course is based upon students developing skills in listening, reading, writing, speaking, viewing and representing. These skills are taught and assessed through students interacting with texts in a variety of medium. Text means any communications written or spoken or visual e.g. book, newspaper, film, article, advertisement, webpage, graphic, poem etc.

Students will be required to work on assessment tasks, both in class and at home.

The course consists of the following areas of study:

1. Texts and Context
2. Area of Study
3. Shakespearean Appropriation
4. Contemporary Storytelling- Documentary

**ASSESSMENT SCHEDULE:**

Timeframe	Task	Assessment Area	Weighting	Due Date
Term 1	Speaking	Knowledge, skills and understanding	25%	P1, Tuesday 27 March Week 9
Term 2	AOS Fear Folio	Knowledge, skills and understanding	25%	P1, Friday 1 June Week 5
Term 3	Shakespearean Appropriation- Inquiry Based Learning	Knowledge, skills and understanding	25%	P1 Tuesday, 25 September Week 10
Term 4	Contemporary Storytelling	Knowledge, skills and understanding	25%	P1 Friday, 16 November Week 5

SUBJECT: **MATHEMATICS**  
*Mandatory* 2018  
 HEAD TEACHER: **Mr P Geeves**

**INTRODUCTION:** The course consists of the following modules of study:

- |                       |                           |
|-----------------------|---------------------------|
| 1. Space and Geometry | 4. Data                   |
| 2. Number             | 5. Patterns and Algebra   |
| 3. Measurement        | 6. Working mathematically |

**ASSESSMENT SCHEDULE:**

Year 10 – Stage 5.1

Mathematics

Head Teacher: Mr P Geeves

Term 1		
Topic / Theme Description	Assessment	Approx. due date
Financial Mathematics, Measurement	Financial Mathematics Exam	Week 6
Term 2		
Topics / Theme Description	Assessment	Approx. due date
Algebraic Expressions, Indices, Probability	Half Yearly Exam (Measurement, Algebraic Expressions)	Week 5
Term 3		
Topics / Theme Description	Assessment	Approx. due date
Single Variable and Bivariate Statistics, Linear Relationships, Properties of Geometric Figures	Single Variable and Bivariate Statistics Assignment	Week 4
Term 4		
Topics / Theme Description	Assessment	Approx. due date
Right Angled Triangles, Equations, Formulas and Inequalities, Non-Linear Relationships	Yearly Exam (Properties of Geometric Figures, Right Angled Triangles)	Week 5

## Year 10 – Stage 5.2

## Mathematics

Head Teacher: Mr P Geeves

Term 1		
Topic / Theme Description	Assessment	Approx. due date
Financial Mathematics, Measurement, Algebraic Expressions	Measurement Exam	Week 8
Term 2		
Topics / Theme Description	Assessment	Approx. due date
Indices, Probability, Single Variable & Bivariate Statistics	Half Yearly Exam (Algebraic Expressions, Indices)	Week 5
Term 3		
Topics / Theme Description	Assessment	Approx. due date
Linear Relationships, Properties of Geometric Figures, Right Angled Triangles	Single Variable and Bivariate Statistics Assignment	Week 4
Term 4		
Topics / Theme Description	Assessment	Approx. due date
Equations, Formulas and Inequalities, Quadratic Expressions, Equations and Non-Linear Relationships	Yearly Exam (Right Angled Triangles, Equations, Formulas and Inequalities)	Week 5

## Year 10 – Stage 5.3

## Mathematics

Head Teacher: Mr P Geeves

Term 1		
Topic / Theme Description	Assessment	Approx. due date
Measurement, Indices and Surds, Probability	Indices and Surds Exam	Week 9
Term 2		
Topics / Theme Description	Assessment	Approx. due date
Single Variable and Bivariate Statistics, Expressions and Equations, Linear Relationships	Half Yearly Exam (Probability, Single Variable and Bivariate Statistics)	Week 5
Term 3		
Topics / Theme Description	Assessment	Approx. due date
Geometrical Figures and Circle Geometry, Trigonometry, Quadratic Expressions and Equations	Trigonometry Assignment	Week 7
Term 4		
Topics / Theme Description	Assessment	Approx. due date
Non-Linear Relationships, Functions and Their Graphs, Logarithms and Polynomials	Yearly Exam (Quadratic Expressions and Equations, Non-Linear Relationships, Functions and Their Graphs)	Week 5

SUBJECT: **SCIENCE**  
*Mandatory* 2018  
RELIEVING HEAD TEACHER: **Mrs J O’Keeffe**

**INTRODUCTION:** The course consists of the following modules of study:

1. Chemistry
2. Physics
3. Biology
4. Geology
5. Independent Investigation/Science Skills

**ASSESSMENT SCHEDULE:**

Timeframe	Task	Assessment Area	Weighting
Semester 1	Student Research Project (SRP)	Practical	30%
Semester 1	Topic Tests	Knowledge	20%
Semester 2	Practical Test	Practical	20%
Semester 2	Topic Tests	Knowledge	30%

**SUBJECT: AUSTRALIAN HISTORY**  
**Mandatory 2018**  
**HEAD TEACHER: Mr W Smith**

**INTRODUCTION:** The knowledge and skills outcomes from this course include: Recounting major historical events in chronological order, sequencing major historical events to show understanding of continuity, change and causation.

**ASSESSMENT SCHEDULE:**

Timeframe	Task	Assessment Area	Weighting
Term 1	Source Analysis	Knowledge and Understanding	20%
Term 2	Research Assignment	Understanding, Skills and Research	20%
Term 3	Extended Response	Understanding, Skills and Research	20%
Term 4	Tests and Examinations	Knowledge, Understanding and Skills	40%

**SUBJECT: AUSTRALIAN GEOGRAPHY – Delivered in Year 9**  
**Mandatory 2018**  
**HEAD TEACHER: Mr W Smith**

**INTRODUCTION:** The assessment schedule for Geography reflects the knowledge and skills outcomes expected of Stage 5 Geography students.

**ASSESSMENT SCHEDULE:**

Timeframe	Task	Assessment Area	Weighting
Term 1	Assignment	Knowledge, Understanding and Skills	20%
Term 2	Research Assignment	Understanding, Skills and Research	20%
Term 3	Fieldwork	Understanding, Skills and Research	20%
Term 4	Tests and Examinations	Knowledge, Understanding and Skills	40%

SUBJECT: **PERSONAL DEVELOPMENT, HEALTH AND PHYSICAL EDUCATION (PDHPE)**  
*Mandatory* 2018  
 HEAD TEACHER: **Mr K Bassingthwaighte**

**INTRODUCTION:** The course consists of content strands below:

- STRAND 1: Self and Relationships
- STRAND 2: Movement Skill and Performance
- STRAND 3: Individual and Community Health
- STRAND 4: Lifelong Physical Activity

**ASSESSMENT SCHEDULE:**

Timeframe	Task No	Task	Assessment Area	Weighting
Overall performance in Year 9 PDHPE	1	Marks Achieved in Year 9		30%
Semester 2 Year 10	2	Assignment – “Taking Care of Me” writing task	Personal Development and Health	25%
Semester 2 Year 10	3 a, b	Movement Skill and Performance	Sport Studied	45%

Please note: In addition to the mandatory courses outlined above, there may be other compulsory co-curricular programs or activities for all Year 10 students. You will be informed of any such requirements in writing during the year.



SUBJECT: **AGRICULTURAL TECHNOLOGY**  
 2018  
 RELIEVING HEAD TEACHER: Mrs J O’Keeffe

**INTRODUCTION:** The course consists of the following modules of study:

1. Plant production
2. Animal production
3. Farm chemicals and safety
4. Student projects

**ASSESSMENT SCHEDULE: 100 Hour Course**

Timeframe	Task	Assessment Area	Weighting
Term 1	Integrated Pest Management	Research	20%
Term 1	Practical assessment (log, practical)	Skills	30%
Term 2	Examination and ILP	Knowledge	50%

**ASSESSMENT SCHEDULE: 200 Hour Course**

Timeframe	Task	Assessment Area	Weighting
Term 1	Integrated Pest Management	Research	10%
Term 1	Practical assessment (log, practical.)	Skills	20%
Term 2	Half Yearly Examination	Knowledge	20%
Term 3	Video task	Knowledge/practical	35%
Term 4	Yearly Examination	Knowledge	15%

SUBJECT: **CLASSICAL BALLET**  
**PERFORMING ARTS - DANCE**  
Currently not available in 2018

HEAD TEACHER: Mrs K Boyd

**INTRODUCTION:** The course consists of the following modules of study:

1. Performance
2. Composition
3. Appreciation
4. Repertoire

**ASSESSMENT SCHEDULE:** 100 Hour Course

Timeframe	Task	Assessment Area	Weighting
Term 1	Class work performance assessment task – display both barre and centre	Performance	30%
Term 1 and 2	Composition Assessment Tasks	Composition	25%
Term 2	Research assignment and written examination – terminology and video analysis	History of Ballet and Ballet Appreciation	25%
Term 2	Performance Piece	Repertoire	20%

SUBJECT: **COMMERCE**  
 2018  
 HEAD TEACHER: Mr W Smith

**INTRODUCTION:** This course includes the following modules of study:

1. Overview of Consumers/Business/Government
2. Law
3. Buying a Car
4. Moving Out
5. Making a Will
6. Choosing a Career
7. Applying for Employment
8. Income Tax

**ASSESSMENT SCHEDULE:** 100 Hour Course

Timeframe	Task	Assessment Area	Weighting
Term 1	Research Assignment	Knowledge, research and Understanding	50%
Term 2	Exam	Knowledge, Understanding and Skills	50%

**ASSESSMENT SCHEDULE:** 200 Hour Course

Timeframe	Task	Assessment Area	Weighting
Term 1	Research Assignment	Knowledge, research and Understanding	25%
Term 2	Exam	Knowledge, Understanding and Skills	25%
Term 3	Research Assignment	Knowledge, research and Understanding	25%
Term 4	Tests and Examinations	Knowledge, Understanding and Skills	25%

SUBJECT: **DANCE**  
2018  
HEAD TEACHER: Mrs K Boyd

**INTRODUCTION:** The course consists of the following modules of study:

1. Performance
2. Composition
3. Appreciation

**ELECTIVE FEE:** \$10

**ASSESSMENT SCHEDULE:** 100 Hour Course

Unit	Component	Task Due	Weight
Arts As Stimulus	Composition	Week 4 Term 1 23 February 2018	15%
Musical Theatre	Performance Appreciation	Week 11 Term 1 12 April 2018	40%
Dance as Language	Performance Composition	Week 5 Term 2 29 May 2018	45%

**SUBJECT:** **DRAMA**  
 Currently not available for 2018

**HEAD TEACHER:** Mrs K Boyd

**INTRODUCTION:** The course consists of the following modules of study:

- |                   |                                    |
|-------------------|------------------------------------|
| 1. Improvisation  | 5. Performance Spaces              |
| 2. Play building  | 6. Technical Aspects of Production |
| 3. Dramatic Forms | 7. Dramatic Presentations          |
| 4. Scripts        | 8. Discussion                      |

**ELECTIVE FEES:** \$10

**ASSESSMENT SCHEDULE:** 100 Hour Course

Time Frame	Task	Assessment Area	Weighting
Term 1	Improvisation/Logbooks	Logbook reflections	20%
Term 1	Stanislavski/Duologues	Group Performance / Written Reflection	30%
Term 2	Commedia Dell'Arte	Performance	20%
Term 2	Verbatim	Performance / Written	30%

**ASSESSMENT SCHEDULE:** 200 Hour Course

Time Frame	Task	Assessment Area	Weighting
Term 1	Improvisation/Logbooks	Logbook reflections	10%
Term 1	Stanislavski/Duologues	Group Performance/ Written Reflection	15%
Term 2	Commedia Dell'Arte	Performance	10%
Term 2	Verbatim	Performance / Written	25%
Term 3	Performance Text	Performance	15%
Term 3	Project/Exam	Written reflection	10%
Term 4	Performance Group	Performance	10%
Term 4	Log book	Written reflection	5%

**SUBJECT:** FOOD TECHNOLOGY  
2018  
**HEAD TEACHER:** Ms D Shea

**INTRODUCTION:** The course consists of the following modules of study:

1. Food for special needs
2. Food product development

The 200 hour course has the following additional modules:

3. Food trends
4. Food for Special Occasions

**ASSESSMENT SCHEDULE:** 100 Hour Course

Timeframe	Task	Assessment Area	Weighting
Term 1	Research/Practical	Food for Special needs	40%
Term 2	Research	Food Trends	30%
Term 2	Unit Test	All Work	30%

**ASSESSMENT SCHEDULE:** 200 Hour Course

Timeframe	Task	Assessment Area	Weighting
Term 1	Research/Practical	Food for Special Needs	20%
Term 2	Research	Food Trends	15%
Term 2	Unit Test	All Work for Semester 1	15%
Term 3	Design Folio/Practical	Food Product Development	30%
Term 4	Research	Food for Special Occasions	20%

SUBJECT: **GLOBAL STUDIES**  
2018  
HEAD TEACHER: Mr W Smith

**INTRODUCTION:** This course includes the following modules of study:

1. Australia's Neighbours
2. Political and Developmental Geography

**ASSESSMENT SCHEDULE:** 100 Hour Course

Timeframe	Task	Assessment Area	Weighting
Term 1	Research Assignment	Knowledge, research and Understanding	50%
Term 2	Exam	Knowledge, Understanding and Skills	50%

**SUBJECT:** GRAPHICS TECHNOLOGY  
 No subject in 2018  
**HEAD TEACHER:** Mr M Wiggins

**INTRODUCTION:** The course consists of the following modules of study:

1. Drawing skills and concepts using AS1100 standards
2. Operate CAD programs.

**ASSESSMENT SCHEDULE: 100 Hour Course**

Timeframe	Task	Assessment Area	Weighting
Terms 1 and 2	Drawing sheets / Architecture	Skills	45%
Terms 1 and 2	Architecture Assignment 1	Knowledge/skills	40%
Term 2	Architecture Assignment 2	Knowledge	15%

**ASSESSMENT SCHEDULE: 200 Hour Course**

Timeframe	Task	Assessment Area	Weighting
Terms 1 and 2	Drawing sheets / Architecture	Skills	22.5%
Terms 1 and 2	Architecture Assignment 1	Knowledge / skills	20%
Term 2	Architecture Assignment 2	Knowledge	7.5%
Term 3	Product Drawing Sheets	Skills	20%
Terms 3/4	Product Assignment and CAD	Knowledge / skills	30%



SUBJECT: **INDUSTRIAL TECHNOLOGY**  
**2018**  
**ELECTRONICS / METAL / TIMBER / ENGINEERING**

HEAD TEACHER: Mr M Wiggins

**INTRODUCTION:** The course consists of the following modules of study:

1. Safety
2. Related Theory
3. Practical Skills

**ASSESSMENT SCHEDULE:** 100 Hour Course

Timeframe	Task	Outcomes	Assessment Area	Weighting
Terms 1 and 2	Completed Design Folio, Assignment and Construction Report	5.2.1, 5.3.1, 5.4.1, 5.6.1, 5.7.1, 5.7.2	Research	30%
Term 2	Theory test	5.1.1, 5.2.2, 5.3.1, 5.5.1	Knowledge	10%
Term 2	Practical Work	5.1.1, 5.1.2, 5.2.2, 5.3.2, 5.4.2	Practical skills	60%

**ASSESSMENT SCHEDULE:** 200 Hour Course

Timeframe	Task	Outcomes	Assessment Area	Weighting
Terms 1 and 2	Completed Design Folio, Assignment and Construction Report	5.2.1, 5.3.1, 5.4.1, 5.6.1, 5.7.1, 5.7.2	Research	10%
Term 2	Practical Work	5.1.1, 5.1.2, 5.2.2, 5.3.2, 5.4.2	Practical skills	30%
Term 3	Theory test	5.1.1, 5.2.2, 5.3.1, 5.5.1	Knowledge	20%
Terms 3 and 4	Complete Theory Book and Construction Report	5.2.1, 5.3.1, 5.4.1, 5.6.1, 5.7.1, 5.7.2	Research	10%
Terms 3 and 4	Practical Work	5.1.1, 5.1.2, 5.2.2, 5.3.2, 5.4.2	Practical Skills	30%

SUBJECT: INTERNATIONAL STUDIES  
2018  
HEAD TEACHER: Mr W Smith

This course was formerly known as Social Studies

**INTRODUCTION:** This course consists of the following modules of study:

1. Core module. Understanding culture and diversity in today's world.
2. Cultural tourism
3. Culture and sport
4. Coming to Australia

**ASSESSMENT SCHEDULE:** 100 Hour Course

Timeframe	Task	Assessment Area	Weighting
Term 1	Research Assignment	Knowledge and Skills	50%
Term 2	Examination	Knowledge, Skills and Understanding	50%

SUBJECT **INFORMATION AND SOFTWARE TECHNOLOGY**  
 2018  
 HEAD TEACHER: Mr D Opfer

**INTRODUCTION:** The course consists of the following modules of study, some of which are combined via project work:

1. Digital Media
2. Flash Animation
3. Robotics / IA
4. Website Development
5. Networking
6. Hardware
7. Programming
8. Audio
9. Video
10. Databases

**ASSESSMENT SCHEDULE: 100 Hour Course**

**NB:** All tasks are completed in class as ongoing learning

Timeframe	Task	Assessment Area	Weighting
Term 1	Project 1	Skills	40%
Term 2	Project 2	Skills / Knowledge	60%

**ASSESSMENT SCHEDULE: 200 Hour Course**

**NB:** All tasks are completed in class as ongoing learning

Timeframe	Task	Assessment Area	Weighting
Term 1	Project 1	Skills	20%
Term 2	Project 2	Skills / Knowledge	30%
Term 3	Project 3	Skills	20%
Term 4	Project 4	Skills / Knowledge	30%

SUBJECT: **JAPANESE**  
2018  
HEAD TEACHER: Mr D Opfer

**INTRODUCTION:** The 100 hour course consists of the following modules of study:

- Pets
- Food
- Time and Hobbies
- Katakana

The 200 hour course will also include the following areas of study:

- Transport and Daily Activities
- Free time
- Family album

### **ASSESSMENT**

Students will be assessed by proficiency scales (score of 1-5) in four skill areas: listening, speaking, reading and writing. These scales are based on the Art and Science of Teaching Scales. Students are expected to work toward being proficient (level 3), or better. To get a level 5, students need to do study on their own and show they are an independent learner, learning more than is taught in class.

Students will be tested (assessment of learning) on the four skill areas at the end of the units:

- Pets
- Food
- Time and Hobbies
- Transport and Daily Activities
- Free time

There is also assessment for learning built throughout the 100 and 200 hour courses.

SUBJECT: **MARINE TECHNOLOGY**  
 2018  
 RELIEVING HEAD TEACHER: Mrs J O’Keeffe

**INTRODUCTION:** The course consists of the following modules of study:

The following topics at a preliminary level: water safety, first aid, snorkelling, fish and fisheries, oceans, coastlines, mangroves and rock platforms, marine plants and animals, management and employment, aquariums, water craft design and construction.

**ASSESSMENT SCHEDULE:** 100 Hour Course

Timeframe	Task	Assessment Area	Weighting
Term 1	Practical Skills	Swimming/Snorkelling	15%
Term 1	Report	Marine Debris	25%
Term 2	Booklet	Mangroves	25%
Term 2	Examination	Knowledge	35%

**ASSESSMENT SCHEDULE:** 200 Hour Course

Timeframe	Task	Assessment Area	Weighting
Term 1	Report	Marine Debris	15%
Term 2	Booklet	Mangroves	10%
Term 3	Research Task	Marine Mammals	25%
Term 4	Practical Skills	Swimming/Snorkelling	15%
Term 4	Yearly Examination	Knowledge	35%

SUBJECT: **MULTIMEDIA TECHNOLOGY**  
 2018  
 HEAD TEACHER: Mr D Opfer

**INTRODUCTION:** The course consists of the following modules of study:

1. Digital Photography
2. Movie Creation/ Editing
3. Website Creation
4. Animation
5. Game Development

**ASSESSMENT SCHEDULE:** 100 Hour Course

**NB:** All tasks are completed in class as ongoing learning

Timeframe	Task	Assessment Area	Weighting
Term 2	Assignment Portfolio	Research	40%
Term 2	Practical Work	Practical skills	60%

**ASSESSMENT SCHEDULE:** 200 Hour Course

**NB:** All tasks are completed in class as ongoing learning

Timeframe	Task	Assessment Area	Weighting
Term 2	Assignment Portfolio	Research	20%
Term 2	Practical Work	Practical skills	30%
Terms 3/4	Assignment Portfolio	Research	20%
Terms 3/4	Practical Work	Practical Skills	30%

SUBJECT: **MUSIC**  
2018  
HEAD TEACHER: Mrs K Boyd

**INTRODUCTION:** The course consists of the following modules of study:

1. Performing
2. Composing
3. Listening

**ASSESSMENT SCHEDULE:** 100 Hour Course

Task Number	Task Description	Topic	Syllabus Outcomes	Weighting	Due Date
1	Performance	Music for Small Ensembles	5.1, 5.2	25%	Term 1 Week 7 Thursday 15 March 2018
2	Performance	Jazz	5.2, 5.3	25%	Term 2 Week 8 Thursday 21 June 2018
3	Theory Test Topic / Listening and Composition	Jazz	5.7, 5.8, 5.9, 5.10	30% (theory / aural) 20% (comp)	Term 2 Week 9 Friday 29 June 2018

**ASSESSMENT SCHEDULE:** 200 Hour Course

Task Number	Task Description	Topic	Syllabus Outcomes	Weighting	Due Date
1	Performance	Music for Small Ensembles	5.1, 5.2	15%	Term 1 Week 7 Thursday 15 March 2018
2	Performance	Jazz	5.2, 5.3	15%	Term 2 Week 8 Thursday 21 June 2018
3	Theory Test Topic / Listening and Composition	Jazz	5.7, 5.8, 5.9, 5.10	15% (theory / aural) 10% (comp)	Term 2 Week 9 Friday 29 June 2018
4	Performance	Music of a Culture	5.1, 5.2, 5.3	20%	Term 3 Week 8 Thursday 13 Sept 2018
5	Theory Test Topic / Listening	Music of a Culture	5.7, 5.8, 5.8, 5.10	25%	Term 3 Week 9 Thursday 20 Sept 2018

SUBJECT: PHOTOGRAPHY AND DIGITAL MEDIA  
2018  
HEAD TEACHER: Mrs K Boyd

**INTRODUCTION:** The course consists of the following modules of study:

1. Photographic and Digital Imaging Skills
2. Computing Skills
3. Critical/Historical Study

**ASSESSMENT SCHEDULE: 100 Hour Course**

	Components (syllabus)	Weighting	Task 1 Term 1 Week 10	Task 2 Term 2 Week 7	Task 3 Term 2 Week 7
5.1 – 5.6	Artmaking	35%	Portfolio of Images		
5.7 – 5.10	Art Criticism / Art History	30%		Critical / Historical Investigation	
5.7 – 5.10	Artmaking	35%			Portfolio of Images
		100%			

**ASSESSMENT SCHEDULE: 200 Hour Course**

	Components (syllabus)	Weighting	Task 7 Term 2 Week 7	Task 8 Term 2 Week 7
5.7 – 5.10	Art Criticism / Art History	30%	Critical / Historical Investigation	
5.7 – 5.10	Artmaking	70%		Final Body of Work
		100%		



SUBJECT: **PHYSICAL ACTIVITY AND SPORT STUDIES (PASS)**  
 2018  
 HEAD TEACHER: Mr K Bassingthwaighte

**INTRODUCTION:** The course consists of theoretical and practical components which extend students beyond what is covered in Personal Development, Health and Physical Education.

The following modules are studied:

**Movement Skill and Performance Units**

1. Lifesaving – Bronze Star
2. Ultimate Frisbee
3. Modified Grid Iron
4. Australian Rules Football
5. European Handball
6. Archery
7. International games

**Theory Units**

- |                                     |                                  |
|-------------------------------------|----------------------------------|
| 1. Resuscitation and Emergency Care | 3. Anatomy and Physiology        |
| 2. Factors Affecting Performance    | 4. First Aid and Sports Injuries |

**ASSESSMENT SCHEDULE:**

**100 Hour Course and Semester 1**

Timeframe	Task No	Task	Assessment Area	Weighting
Semester 1	1	Bronze Star Award	Practical skills and theory component	55%
	2a, b, c	Movement Skill and Performance 3 of the following 4: Handball, AFL, Ultimate, Modified Grid Iron	Practical skills component	45%

**Semester 2**

Timeframe	Task No	Task	Assessment Area	Weighting
Semester 2	1	Tour de France Investigation	Theory component	40%
	2	International Games	Practical component	30%
	3	Archery	Practical component	30%

**ASSESSMENT SCHEDULE: 200 Hour Course**

Timeframe	Task	Assessment Area	Weighting
Semester 1	Life Saving, Movement Skills Performance	Practical skills and theory component	60%
Semester 2	Theory Assignment: Movement Skill and Performance	Practical skills and theory component	40%

SUBJECT: **TEXTILES TECHNOLOGY**  
2018  
HEAD TEACHER: Ms D Shea

**INTRODUCTION:** The course consists of the following modules of study:

1. Clothing eg. Sundress + Sewing with knitted fabric
2. Elements and Principles of Design/Study of man-made fibres
3. Textile Arts and Furnishings

**ASSESSMENT SCHEDULE:** 100 Hour Course

Timeframe	Task	Assessment Area	Weighting
Term 1	Project 1 Garment	Construction	20%
Term 1	Project 1 Folio	Design Process	20%
Term 2	Project 2 Art Quilt or Garment	Construction	20%
Term 2	Project 2 Folio	Design Process	20%
Term 2	Research	Properties and Performance of Textiles	20%

SUBJECT: VISUAL ARTS  
2018  
HEAD TEACHER: Mrs K Boyd

**INTRODUCTION:** The course consists of the following modules of study:

1. Historical study of works
2. Critical study of works

**ASSESSMENT SCHEDULE: 100 Hour Course**

	Components (syllabus)	Weighting	Task 1 Term 1 Week 10	Task 2 / 3 Term 2 Week 6
5.7 – 5.10	Art Criticism / Art History	30%		Research Task
	Artmaking	20%	VAPD	
5.1 – 5.6	Artmaking	50%		Body of Work
		100%		

**ASSESSMENT SCHEDULE: 200 Hour Course**

	Components (syllabus)	Weighting	Task 3 / 4 Term 4 Week 7
5.7 – 5.10	Art Criticism / Art History	30%	Research Task
5.1 – 5.6	Artmaking	70%	Final Body of Work VAPD
		100%	

**SUBJECT:** **VISUAL DESIGN**  
 Currently not available in 2018  
**HEAD TEACHER:** Mrs K Boyd

**INTRODUCTION:** The course consists of the following modules of study:

1. Three dimensional forms
2. Two dimensional design
3. Design Process documentation

**ASSESSMENT SCHEDULE:** 100 Hour Course

Timeframe	Task	Assessment Area	Weighting
Term 1	Small Product Tasks	Artmaking and Skills	15%
Term 1	Large Product Task	Artmaking and Skills	30%
Term 2	Research Assignment	Design Folio and Historical Study	15%
Term 2	Magazine Cover Design/ Advertisement	Silkscreen / Multi Media Printing / Artmaking	30%
Term 2	Development Work	V.A. Process Diary	10%

**ASSESSMENT SCHEDULE:** 200 Hour Course

Timeframe	Task	Assessment Area	Weighting
Term 1	Small Product Tasks	Artmaking and Skills	7.5%
Term 1	Large Product Task	Artmaking and Skills	25%
Term 2	Research Assignment	Design Folio and Historical Study	7.5%
Term 2	Magazine Cover Design/ Poster/ Advertisement	Silkscreen / Multi Media Printing / Artmaking	15%
Term 2	Development Work	V.A. Process Diary	5%
Term 3	Written Task	Historical Study	10%
Term 4	Development Work	Design Folio	10%
Term 4	Process Work	Visual Process Diary	20%

SUBJECT: **WORK EDUCATION**  
2018  
HEAD TEACHER: Mr W Smith

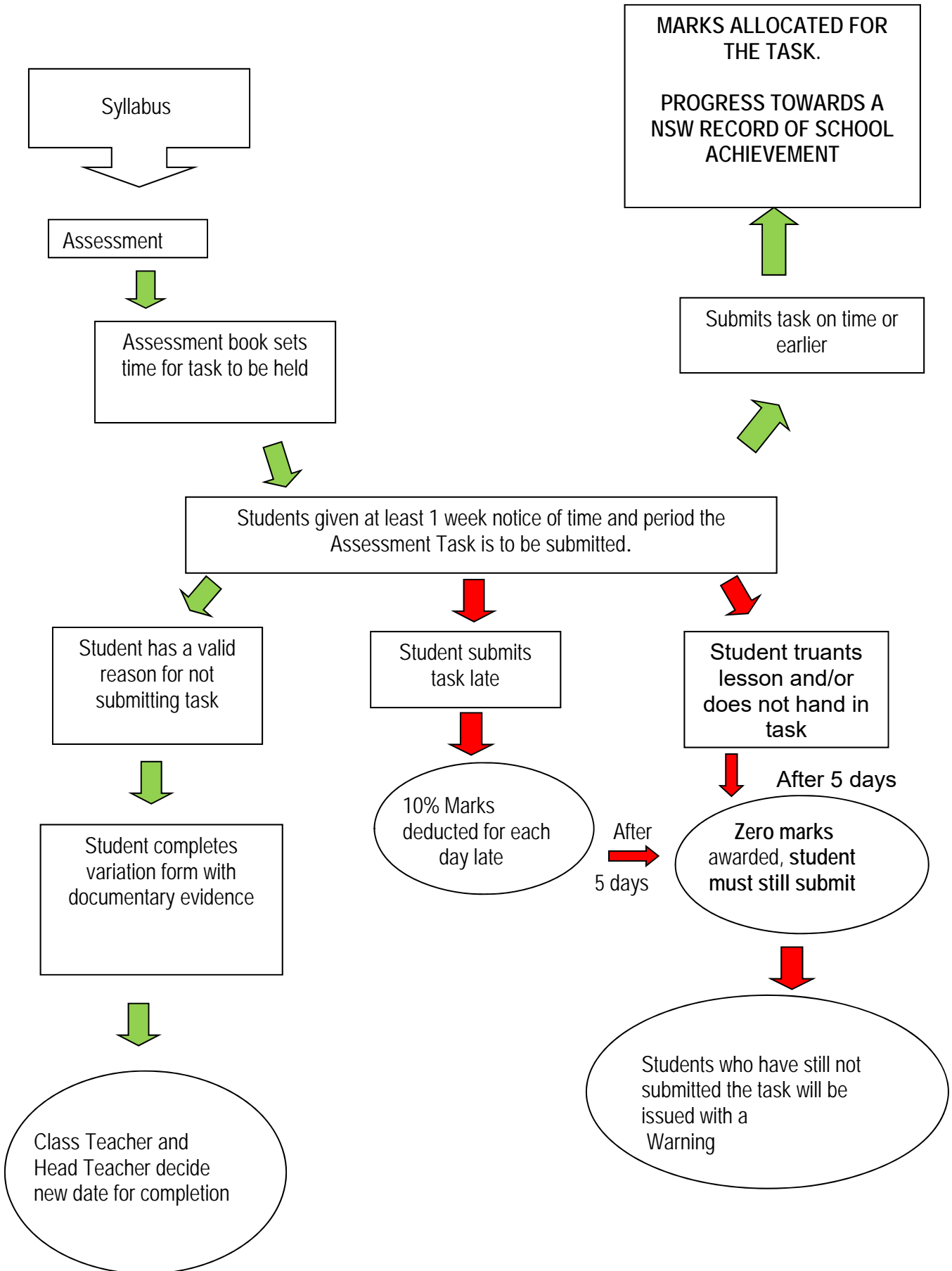
**INTRODUCTION:** The course consists of the following modules of study:

1. The world at work
2. Planning for a working life
3. Workplace
4. Work Portfolio

**ASSESSMENT SCHEDULE:** 100 Hour Course

Timeframe	Task	Assessment Area	Weighting
Term 1	Career choice portfolio	Knowledge and Understanding	30%
Term 1	Workplace safety presentation	Knowledge and Understanding	20%
Term 2	Work Experience Diary	Knowledge, Understanding and Skills	30%
Term 2	Work Experience Employer Report	Knowledge, Understanding and Skills	20%

# ASSESSMENT TASK FLOWCHART





**ASSESSMENT RE-SCHEDULE SHEET**  
(to be given to Deputy Principal Year 10)

Name: \_\_\_\_\_

Roll Call Class: \_\_\_\_\_

Exams Missed: \_\_\_\_\_

Reason: \_\_\_\_\_

Parent/Carer Signature: \_\_\_\_\_

Phone number of Parent/Carer: \_\_\_\_\_